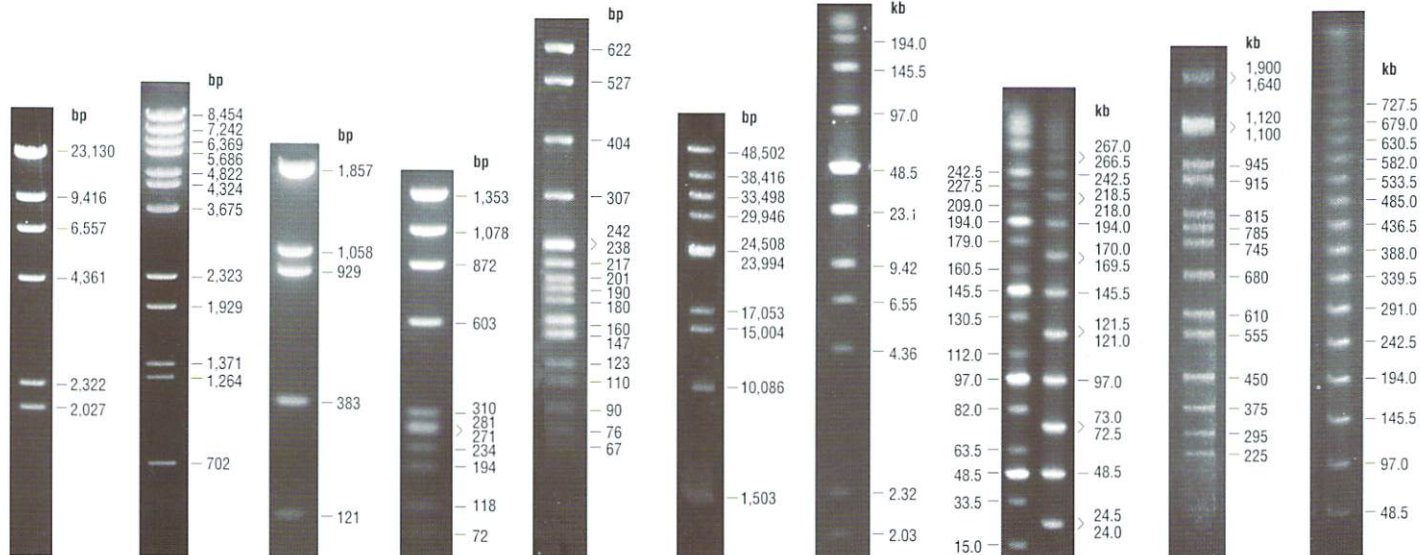


**TriDye™ Ladders:** 1 kb (NEB #N3272), 100 bp (NEB #N3271) and 2-Log (NEB #N3270) DNA Ladders available in ready-to-load format containing xylene cyanol FF, bromophenol blue and orange G.

**Quick-Load™ Ladders:** 1 kb (NEB #N0468), 100 bp (NEB #N0467) and 2-Log (NEB #N0469) DNA Ladders available in ready-to-load format containing bromophenol blue.



**Lambda DNA-Hind III Digest**

1 µg/lane.  
1.0% agarose gel.  
NEB #N3012

**Lambda DNA-BstE II Digest**

1 µg/lane.  
1.0% agarose gel.  
NEB #N3014

**pBR322 DNA-BstN I Digest**

1 µg/lane.  
1.4% agarose gel.  
NEB #N3031

**phiX174 DNA-Hae III Digest**

1 µg/lane.  
1.7% agarose gel.  
NEB #N3026

**pBR322 DNA-Msp I Digest**

1 µg/lane.  
1.8% agarose gel.  
NEB #N3032

**Lambda DNA-Mono Cut Mix**

0.5 µg/lane.  
1% agarose gel.  
6 V/cm, 15°C for  
20 hours. Switch  
times ramped from  
0.5–1.5 seconds.  
NEB #N3019

**Low Range PFG Marker**

1 µg/lane.  
1% agarose gel.  
6 V/cm, 15°C for  
15 hours. Switch  
times ramped from  
1–12 seconds.  
NEB #N0350

**Midrange I & II PFG Markers**

1 µg/lane.  
1% agarose gel.  
6 V/cm, 15°C for  
24 hours. Switch  
times ramped from  
1–25 seconds.  
NEB #N3551 & N3552

**Yeast Chromosome PFG Marker**

1 µg/lane.  
1% agarose gel.  
6 V/cm, 15°C for  
26 hours. Switch  
times ramped from  
70 seconds  
for 15 hours and  
120 seconds  
for 11 hours.  
NEB #N0345

**Lambda Ladder PFG Marker**

1 µg/lane.  
1% agarose gel.  
4.5 V/cm, 15°C for  
48 hours. Switch  
times ramped from  
5–120 seconds.  
NEB #N0340