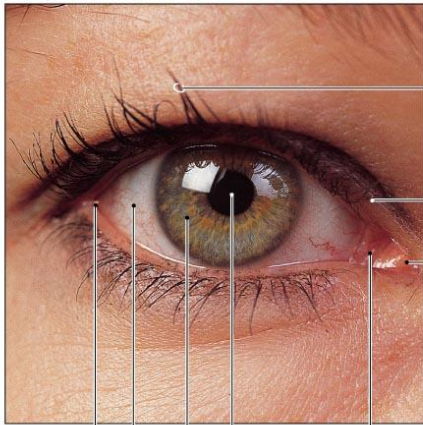


## Accessory Structures of the Eye

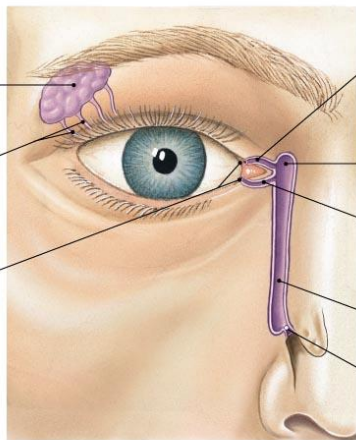


Eyelashes

Palpebra  
(eyelid)

Medial  
canthus

(a) Lateral canthus    Iris    Sclera    Pupil    Lacrimal caruncle



Superior  
lacrimal canal

Lacrimal sac

Inferior  
lacrimal canal

Nasolacrimal duct

Opening of duct  
into nasal cavity

Lacrimal gland

Lacrimal gland ducts

Lacrimal pores

(b)